

NEWSLETTER

Q3 2024



NEWS FLASH: THAILAND **PROJECT FEASIBILITY STUDY**

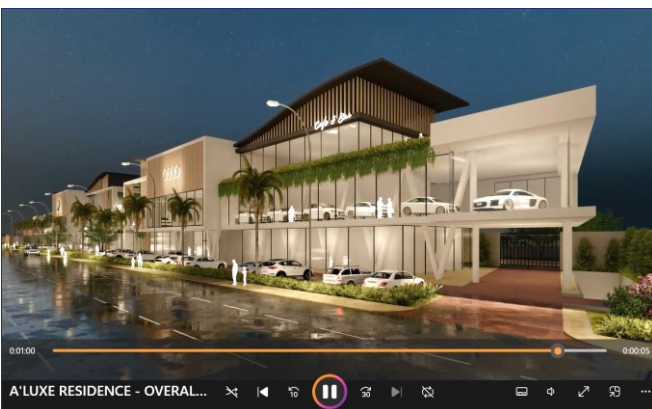
HTDA has completed a feasibility study for a mixed-use project with a property size of about 6.45 hectares located in the Metro Bangkok Region. The project will include 80 residential villa units and 3,000 square meters of prime street-front commercial spaces.

NEWS FLASH: INDONESIA **MIXED-USE TOWER PROJECT**

HTDA is working with an overseas client to design a mixed-use tower building in Central Jakarta District which is planned as a hybrid building structure that would provide retail commercial, office spaces and condominium units with a spectacular view of Jakarta Region.

NEWS FLASH: THAILAND **WATERFRONT MANSIONS**

HTDA is in negotiation with a client owner of a waterfront coastal property of 0.37 hectares located on Sichang Island, Chon Buri, Thailand. The project is envisioned to be a luxury residential cluster of six mansion-styled units with a private clubhouse & yacht marina.



PROJECT ANIMATION PRODUCTION

HTDA has developed its professional capacity in producing animated marketing videos as an extended professional service to better illustrate and sell the design ideas to our prospective clients and intended customers. Our technical team can deliver visually stunning video clips as a complimentary tool to assist project marketing efforts in order to reach out to its intended customers.

International Waterfront City - Part II

Hong Kong SAR is a world-class waterfront city composed of unique skylines between both sides of the Victoria Harbour that is with among the world's most spectacular skylines. It is peppered with many landmarks, buildings and skyscrapers that vary in shape, size and architectural style. Hong Kong has prided itself as a financial centre in the Asia Pacific region with a strong international flavor. The urban development and fabric of Hong Kong can trace its roots from its British past and most recently of the influence after its return to Mainland China. Historically, the property value of Hong Kong has been consistently high due to its limited land supply and a densely populated urban centre area.



REDEFINING ASEAN CENTRALITY

ASEAN Summit 2024

Laos will be hosting ASEAN Summit in Vientiane

This year's ASEAN Summit will take place between October 6 ~ 11 in Vientiane, Laos. The leaders of ASEAN member nations will also be attending the annual East Asia Summit in conjunction with regional powers, including the United States, China and Japan. The Summit, which comes ahead of this year's APEC and G20 meetings in Peru and Brazil. These meetings will set the tone on how the bloc is going to collaborate with its foreign counterparts to actively promote continuing political stability and economic prosperity in the Region.



“Enhancing Connectivity & Resilience”

Vientiane, Laos

REGIONAL WATCH: **SOUTHEAST ASIA QUARTERLY ECONOMIC REVIEW: Q2 2024** [MCKINSEY & COMPANY \(COPYRIGHT ARTICLE\): SEPTEMBER 3, 2024](#)

Southeast Asia's economies remained resilient and delivered credible economic performance in the second quarter 2024. GDP grew in all economies, with Malaysia, the Philippines, Thailand, and Vietnam recording the fastest rate of year-on-year growth over the past four quarters. Indonesia experienced a growth plateau and Singapore grew 0.1% slower this quarter compared to the previous quarter. Globally, economic performance is also resilient, echoing that of Southeast Asia's. The statistics presents a cautiously optimistic economic outlook, with growth observed across various sectors, despite existing challenges.

Weblink: <https://mckinsey.com/featured-insights/future-of-asia/southeast-asia-quarterly-economic-review>

COUNTRY WATCH: **CAN LAOS BECOME SOUTHEAST ASIA'S NEXT MANUFACTURING HUB?** [DW IN FOCUS \(COPYRIGHT ARTICLE\): BY TOMMY WALKER, SEPTEMBER 11, 2024](#)

As Chinese companies increasingly seek expansion opportunities abroad amid rising trade tensions between Beijing and Washington, Laos is trying to present itself as a prime location for these firms to set up their manufacturing units. Amata, a Thai developer known for its industrial parks in Thailand and Vietnam, recently announced the launch of a significant project in Laos amid at drawing manufacturers looking to relocate from China. The move signals a possible shift in regional manufacturing dynamics as Laos, a landlock country, is tapping into its strategic location with its share of long land borders with China.

Weblink: <https://www.dw.com/en/can-laos-become-southeast-asias-next-manufacturing-hub/a-70189537.html>